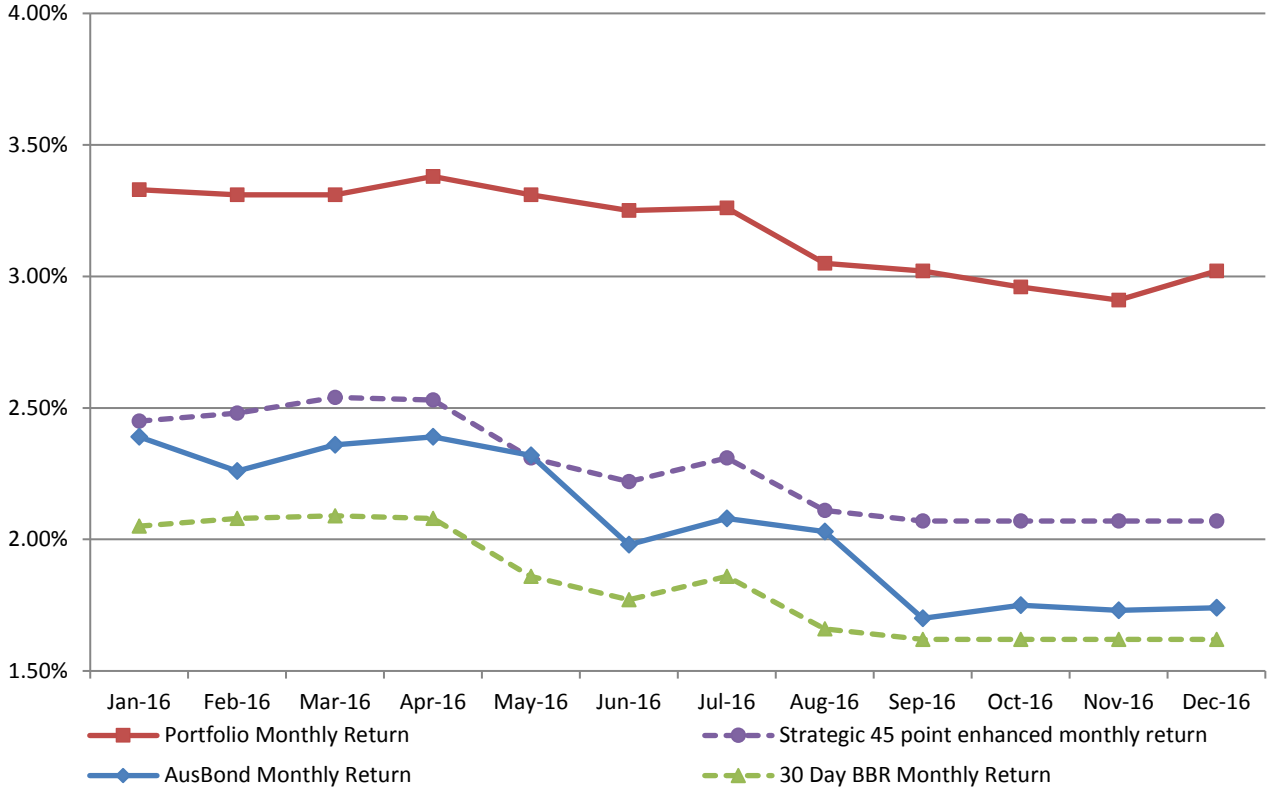


ATTACHMENT B

**INVESTMENT PERFORMANCE
AS AT 31 DECEMBER 2016**

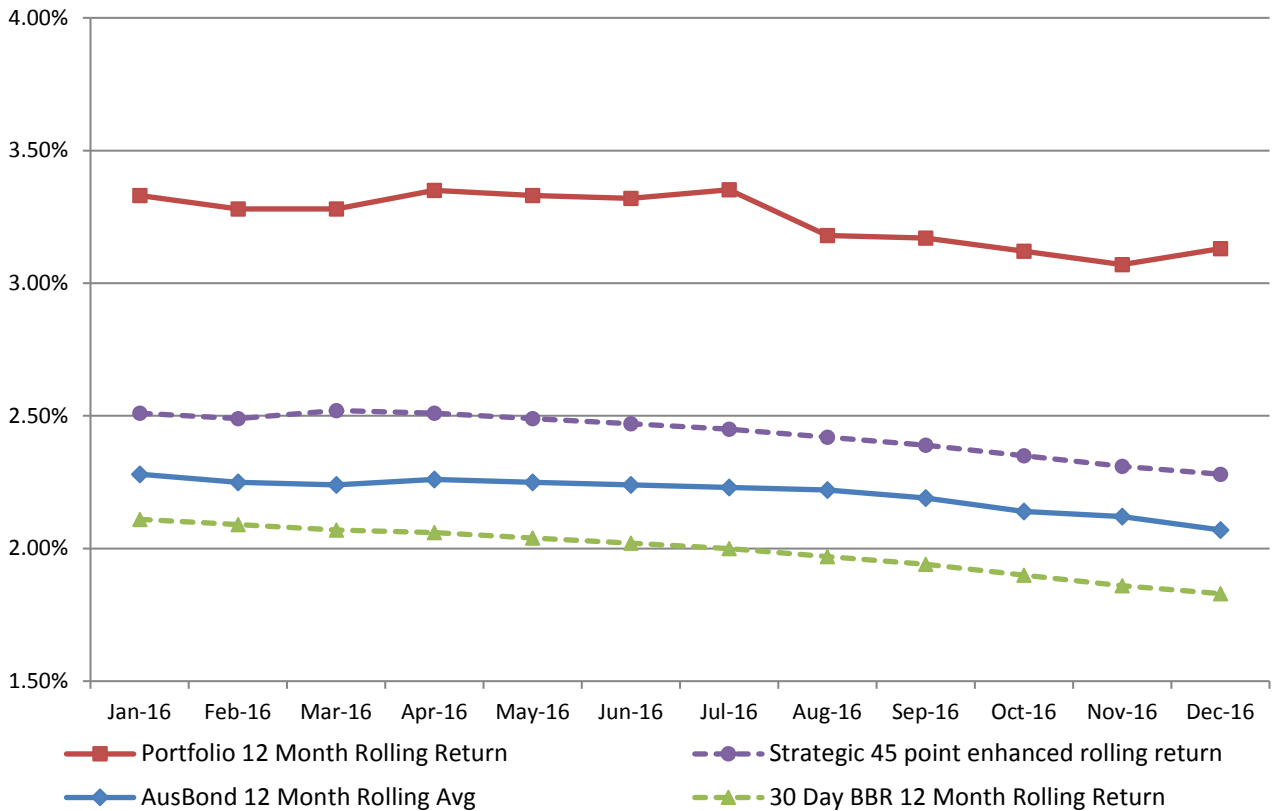
Monthly Results

Actual Portfolio vs Strategic Enhanced Benchmark vs AusBond Benchmark vs 30 Day BBR Benchmark
December 2016

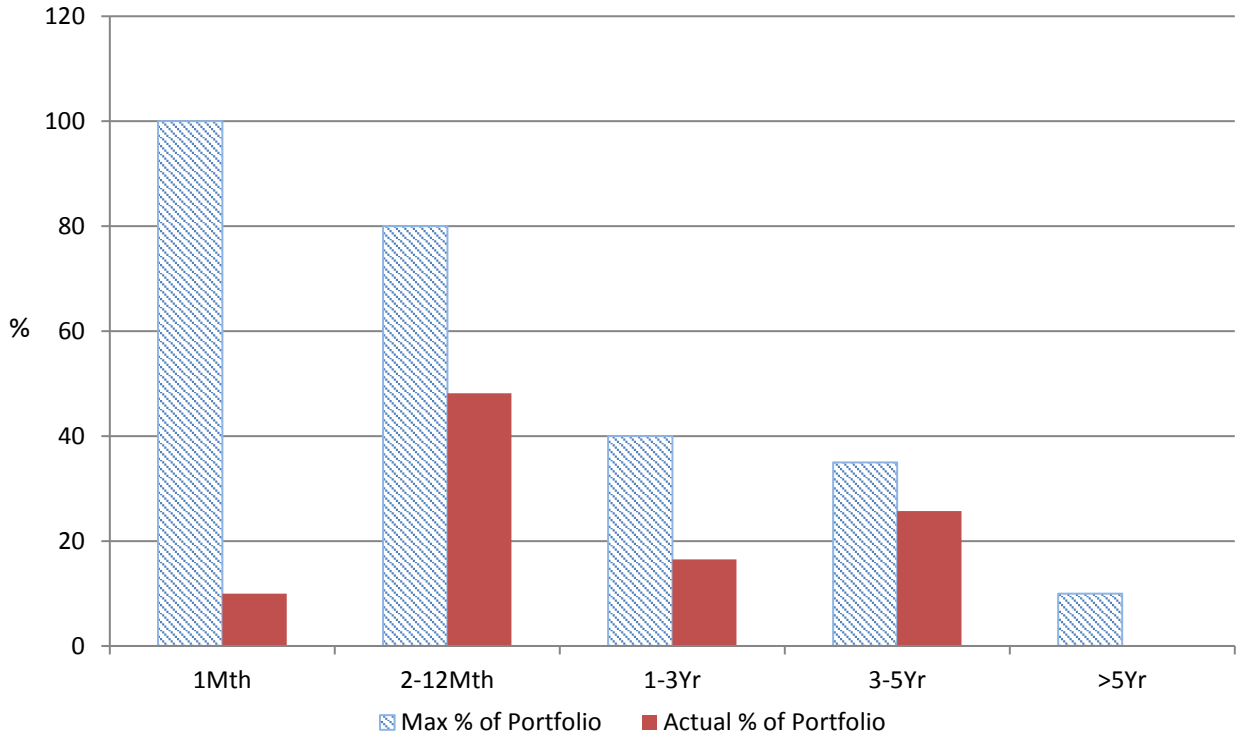


12 Month Rolling Averages

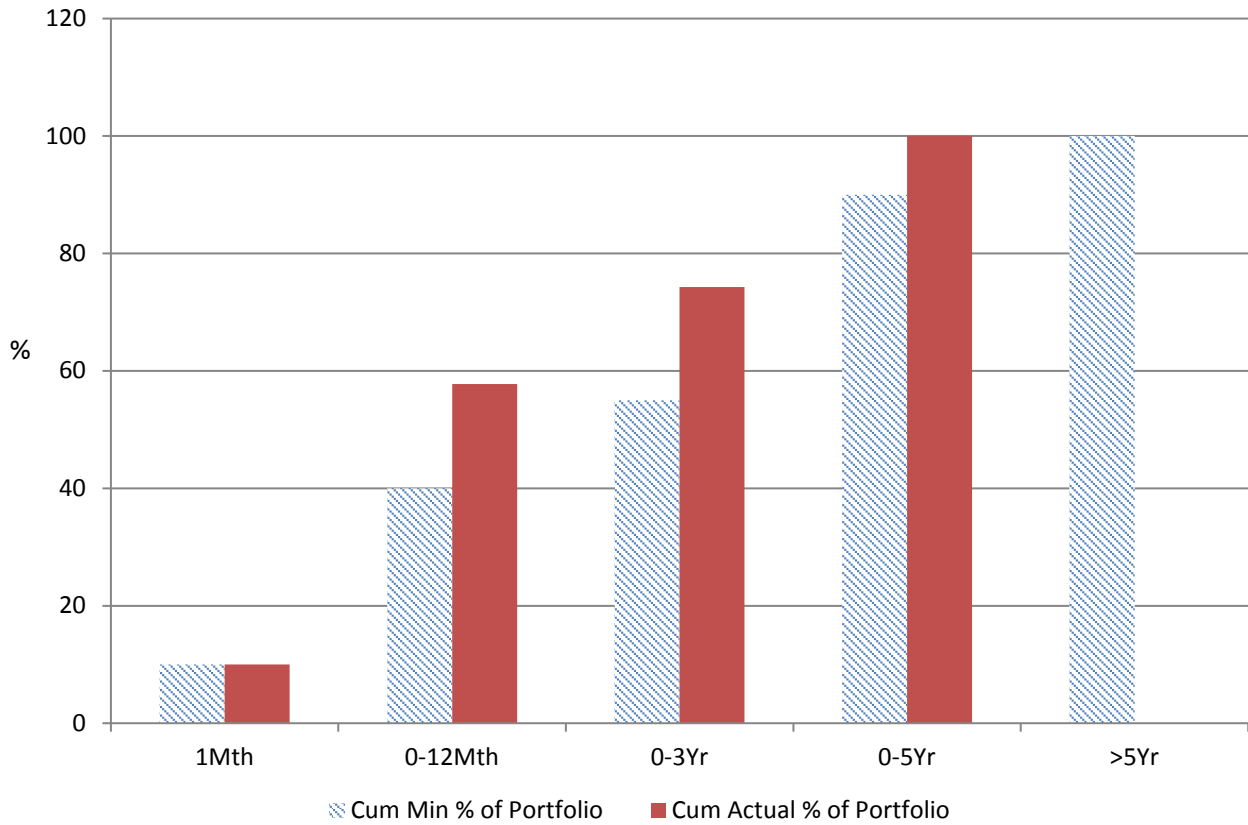
Actual Portfolio vs Strategic Enhanced Benchmark vs AusBond Benchmark vs 30 Day BBR Benchmark
December 2016



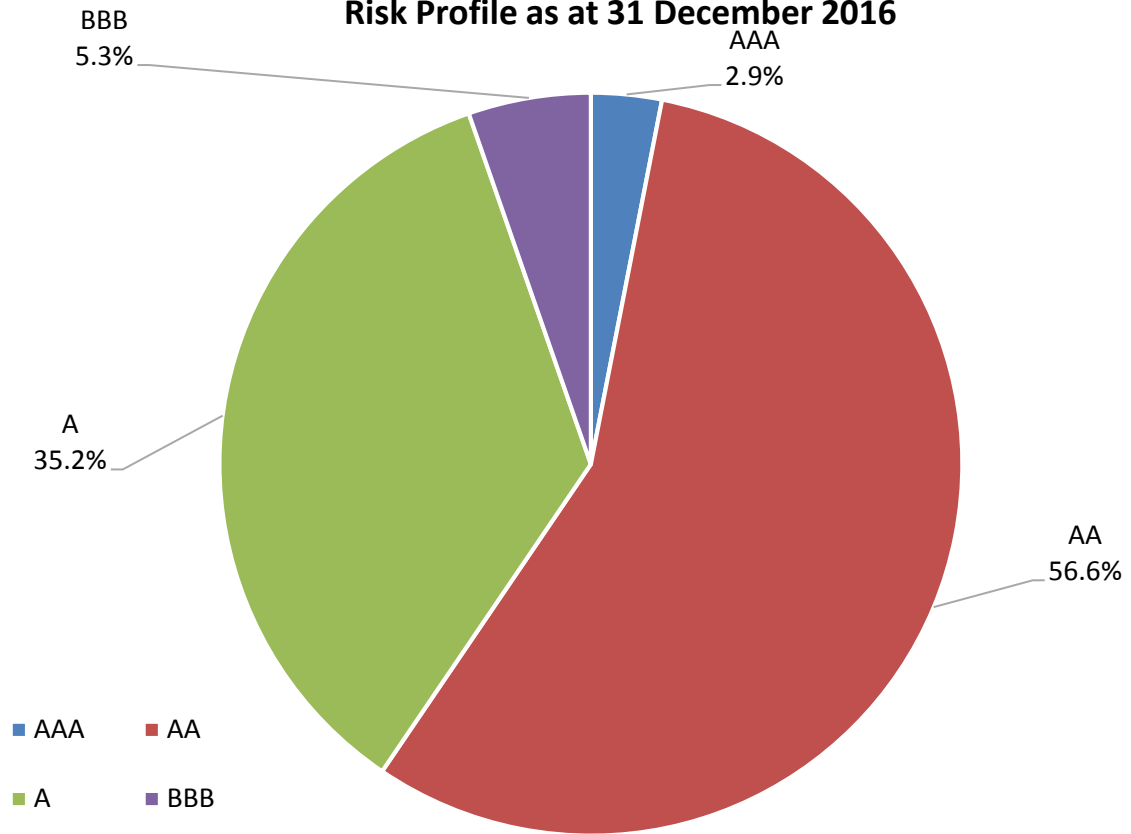
% Liquidity - Maximum Allowances



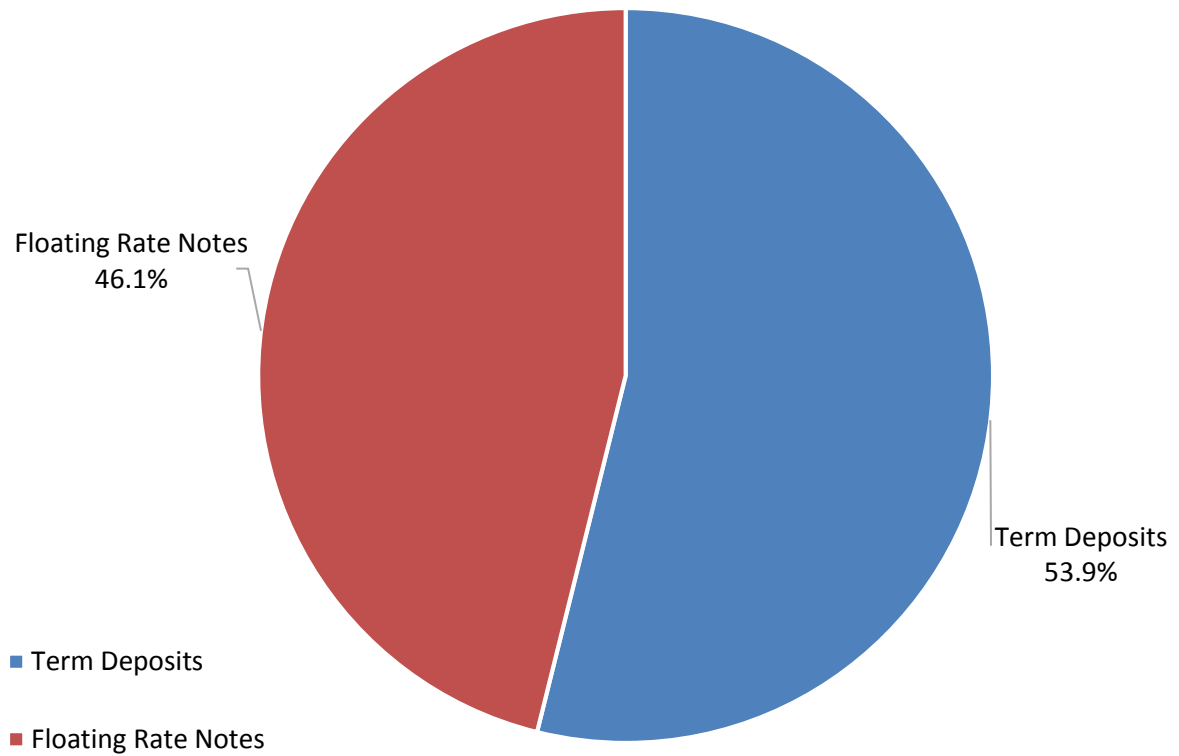
% Liquidity - Minimum Allocations



Risk Profile as at 31 December 2016



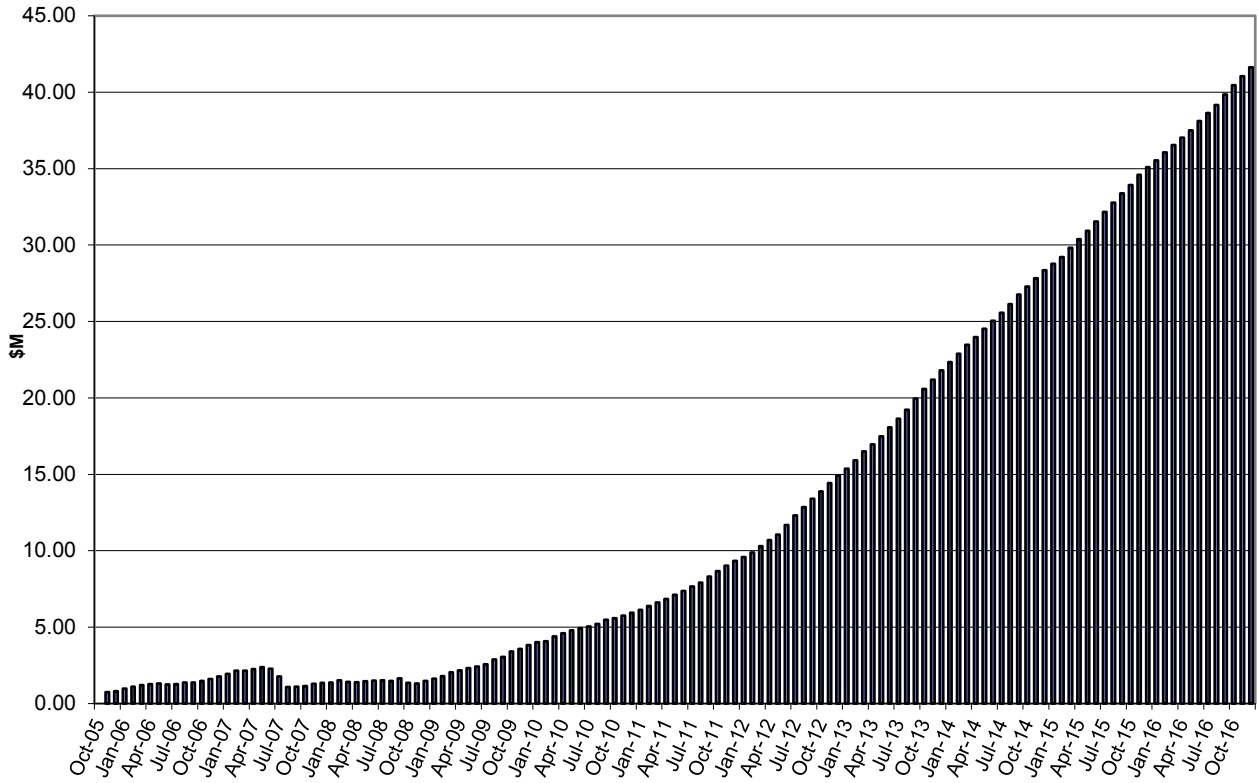
Investment Product Profile as at 31 December 2016



INVESTMENT AND CASH DISTRIBUTION BY FINANCIAL INSTITUTION
AS AT 31 DECEMBER 2016

Institution Category	Financial Institution	Amount \$M	Financial Inst. %	Institution Cat. %
Australian Big 4 Bank (and related institutions)	ANZ Bank	40.0	7.2	
	Commonwealth Bank-related:	105.6	19.0	
	<i>Bankwest</i>	<i>45.0</i>	<i>8.1</i>	
	<i>Commonwealth Bank</i>	<i>60.6</i>	<i>10.9</i>	
	National Aust Bank	84.0	15.1	
	Westpac Banking Corporation-related:	92.6	16.7	
	<i>St George Bank</i>	<i>0.0</i>	<i>0.0</i>	
	<i>Westpac Banking Corporation</i>	<i>92.6</i>	<i>16.7</i>	
Big 4 Total		322.2		58.0
Other Australian ADIs and Australian subsidiaries of foreign institutions	AMP Bank Ltd	5.0	0.9	
	Bank of China-Sydney Branch	5.0	0.9	
	Bank of Communication	5.0	0.9	
	Bank Of Queensland	47.0	8.5	
	Bendigo and Adelaide Bank	26.0	4.7	
	CUA Limited	20.0	3.6	
	Greater Building Society	5.0	0.9	
	Heritage Bank	2.0	0.4	
	IMB	10.0	1.8	
	Members Equity Bank	27.0	4.9	
	Newcastle Permanent Building Society	22.0	4.0	
	Royal Bank of Canada - Sydney	9.5	1.7	
	Suncorp Bank	50.0	9.0	
	AMP Bank Ltd	5.0	0.9	
	Bank of China-Sydney Branch	5.0	0.9	
Other ADI Total		233.5		42.0
Grand Total		555.7	100.0	100.0

Cumulative Outperformance over AusBond Benchmark - 2005-2016



Cumulative Outperformance over 30 Day BBR Benchmark - 2005-2016

